

THE ONLY REAL SMS BROADCASTER USERMANUAL Version_21.3.1

SMS Broadcaster machine is a Portable Messaging Device designed for Government, Military and marketing business.

It is powered by a complex software algorithm and next generation RF computer hardware.

Use the device means you do not have to struggle in maximizing your advertising, expenditure trying to reach the right target group. You can now determine where your target market is and send your message there.

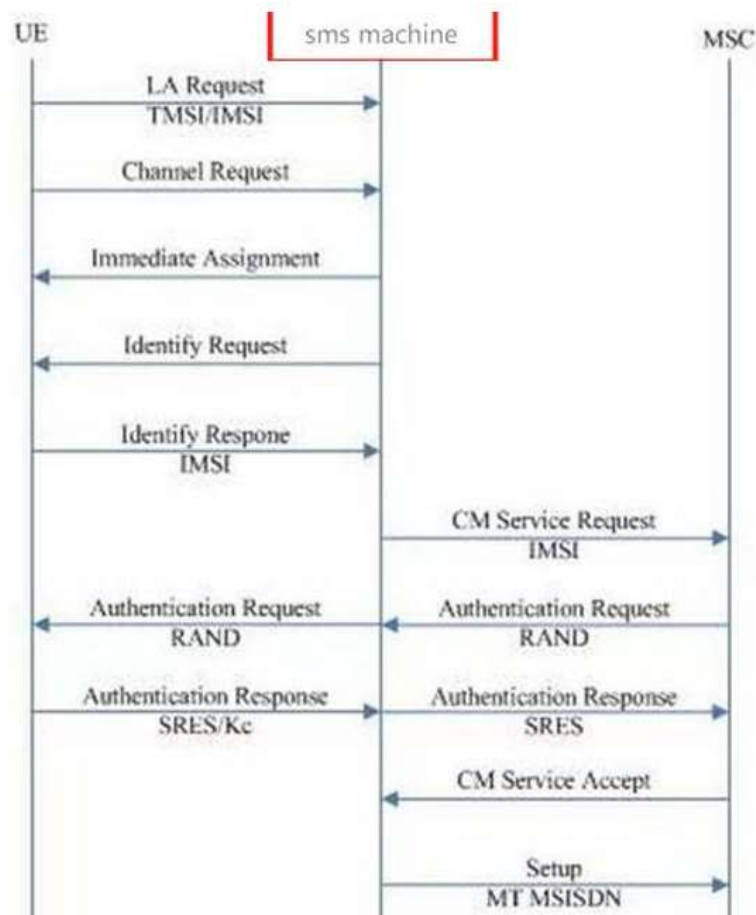


Model: PISCES -X

Working Principle:

This unit has the ability to digitally acquire the identity of the surrounding mobile phone devices within its radius and can directly transmit SMS alert or advertising messages by passing your regular network provider. control or release the surrounding mobile phone devices and monitor receive SMS from mobile phone.

The unit is standalone and do not require cooperation with any cellular operators.

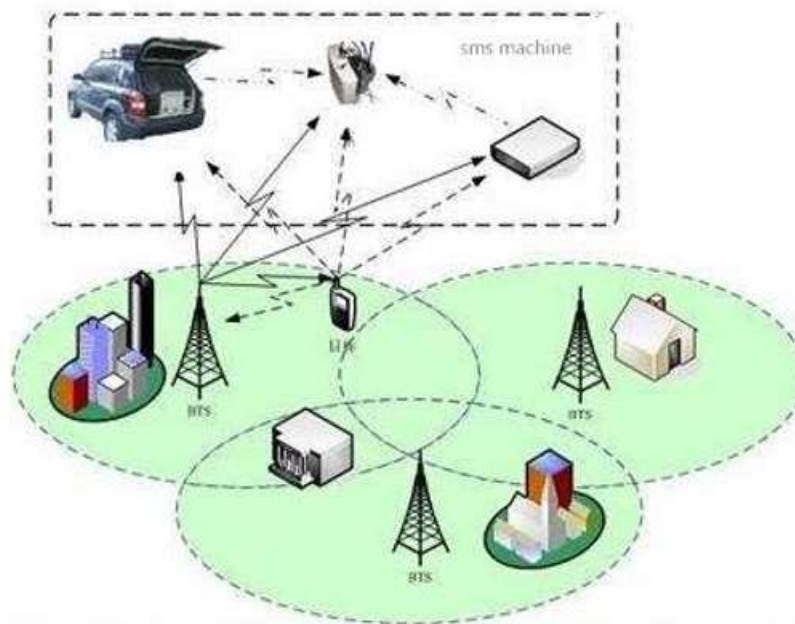


Product Features:

The machine searches the mobile phone number in the area through software, and then send the text message to mobile phone. No need to know the mobile phone number in the area in advance.

- (1) Scope of radiation to the machine as a center, diameter of 500-2000 meters.
- (2) Support all mobile phones(android, Phone),All frequency, includes 2G,3G,4G, no need jammer.
- (3) Sending speed: up to 1000 SMS per minute
- (4) The sender ID can be letters or alphanumeric both.
- (5) Portable equipment: you can send bulk SMS in anywhere, anytime.
- (6) "0" Cost: no need sim card, no need internet. Really one-time payment, lifetime usage.
- (7) It can send more than 1000 characters in one SMS.
- (8) IMEI/IMSI catcher. No need to know mobile number data advance.
- (9) Auto ARFCN, Friendly software interface, control by mobile phone or laptop.
- (10) Track someone cell phone(optional)

Application Guide



Comparison With other Solution:

PLATFORM	SMS Broadcaster	Multi-SIM Text Blaster	Online / Bulk / SIP SMS	Telco Cell Broadcast
Full Admin Control	User	User	Host Provider	Telco
Subscribers Number	Not Required	Required	Required	Limited to its Subscribers
SIM Card	Not Required	Required	Not Required	Not Required
Network	Independent	Telco Dependent	Host & Telco Dependent	Telco Dependent
Message Length	upto 1000 characters	140-160 characters	140-160 characters	93 characters
Sender Branding	Name or Number	SIM Number	Name or Number	Name or Number
Broadcast Effectivity	All Telco / All Networks	Specific Telco	Specific Telco Partner	Specific Telco Subscribers
Message based Targeting	Yes	Requires pre-registered numbers	Requires pre-registered numbers	Yes
Network Congestion	No	Yes	Yes	No if priority mode
Radio Transmission	Active only when sending	Continuous	Continuous	Continuous
Equipment Mobility	Yes	Yes	No	No
Delivery Reports	Yes	Yes	Yes	No
Repetition Rate	Yes	No	No	Yes
Message Storage	Inbox	Inbox	Inbox	Handset dependent
Broadcast Reception	Messaging Function	Messaging Function	Messaging Function	Requires users activation
Cost	Free	per Send	per Send	per Send

Specification:

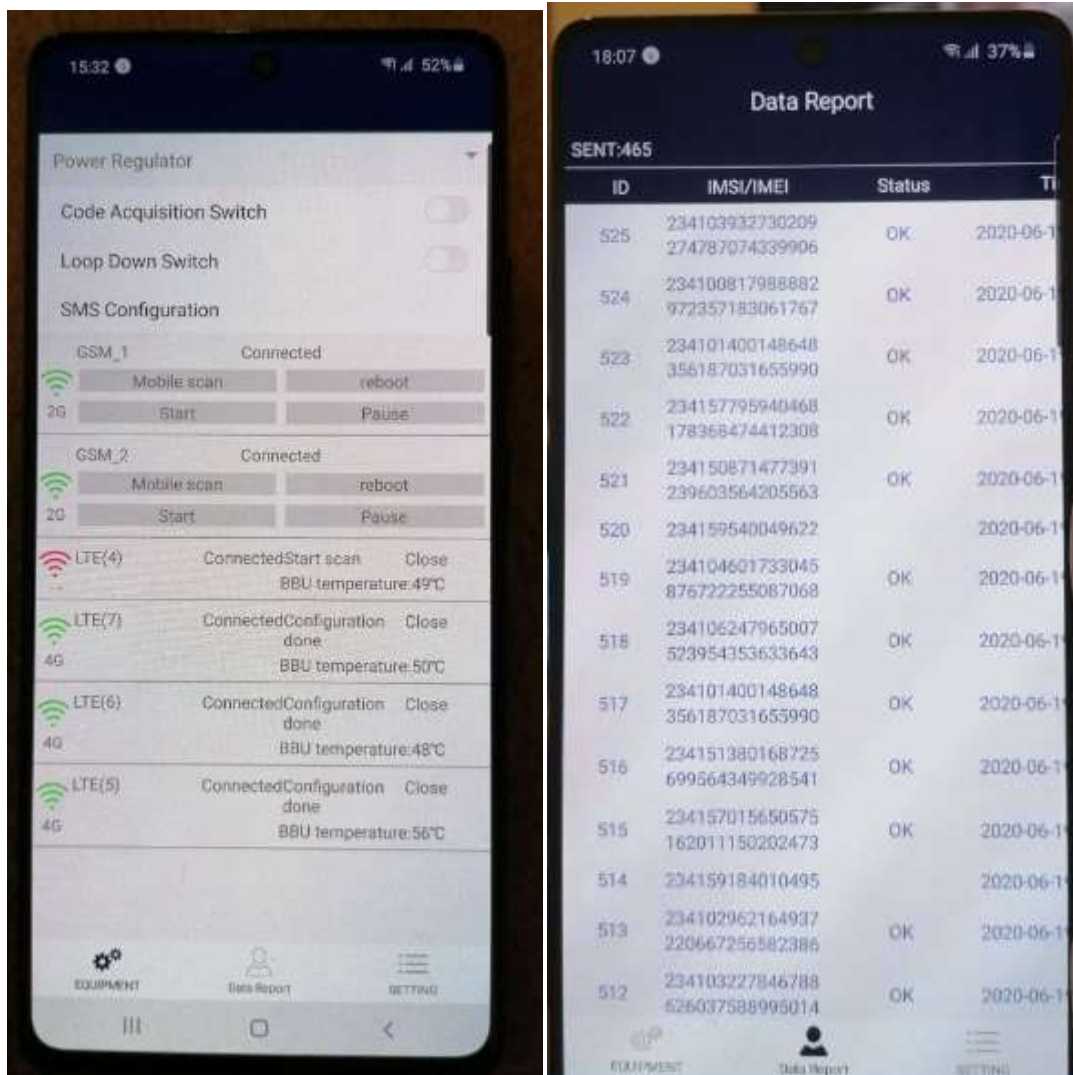
Model	TWT2019
Usability	Portable, Car Mounted or Fixed Installed
Operating Standard	GSM
Broadcast Penetration	GSM, UMTS, 3G, LTE
Frequency Band Option	850, 900, 1700, 1800, 1900, 2100
Output Power Option	20W
Optional Antenna Type	BTS ANTENNA
Effective Range	2KM
Transmission Speed	Upto 1000 SMS per Minute
Management	PC via Web
Power Requirement	Auto 110-220VAC
Metal Housing	Standard 2U*2
Anti-Shock Casing	at Option
Branding	OEM or on request

User interface:

(Control software For PC)

The screenshot displays the 'Mobile Control' software interface. At the top, there are navigation icons for Device, SMS EDIT, GSM RADIO, Alarm, License, and About. Below this is a 'Device Status' section with a table showing details for devices B38 through B3. A 'SHOW LOG' section provides a detailed history of system events, such as 'Configure GSM successfully!' and 'LTE cell updated successfully!'. The main area is a 'Collection Record' table with columns for ID, IMEI, IMSI, State, Operator, Belong, BBUid, and Time. The table lists numerous records, all showing a status of 'OK' and originating from 'Digi' in 'Malaysia'. The interface also includes search and export options for the collection records.

ID	IMEI	IMSI	State	Operator	Belong	BBUId	Time
74387		502162057735118		Digi	Malaysia	B7	2020/2/13 星期四 下午
74386	696890505580883	502162366918517	OK	Digi	Malaysia	B7	2020/2/13 星期四 下午
74385	699221659636176	502160240042350	OK	Digi	Malaysia	B7	2020/2/13 星期四 下午
74384	950824633984251	502168628763686	OK	Digi	Malaysia	B7	2020/2/13 星期四 下午
74383	327795080950907	502164789880423	OK	Digi	Malaysia	B7	2020/2/13 星期四 下午
74382	911056131059921	502165951254259		Digi	Malaysia	B7	2020/2/13 星期四 下午
74381	766760726452764	502161979946593		Digi	Malaysia	B7	2020/2/13 星期四 下午
74380	618743349626519	502165949790140	OK	Digi	Malaysia	B7	2020/2/13 星期四 下午
74379	538465254243551	502163678273742	OK	Digi	Malaysia	B7	2020/2/13 星期四 下午
74378	652184380133548	502166331403981	OK	Digi	Malaysia	B7	2020/2/13 星期四 下午
74377	990831786496775	502161138654993	OK	Digi	Malaysia	B7	2020/2/13 星期四 下午
74376	644859374512928	502163774898604	OK	Digi	Malaysia	B7	2020/2/13 星期四 下午
74375	308825893859601	502162563591903	OK	Digi	Malaysia	B7	2020/2/13 星期四 下午
74374	154591616102713	502167700444452	OK	Digi	Malaysia	B7	2020/2/13 星期四 下午
74373	840812063425828	502162422344956	OK	Digi	Malaysia	B7	2020/2/13 星期四 下午
74372	184845688052183	502167663480333	OK	Digi	Malaysia	B7	2020/2/13 星期四 下午
74371		502162961666858		Digi	Malaysia	B3	2020/2/13 星期四 下午
74370	827950966035670	502160216850054	OK	Digi	Malaysia	B3	2020/2/13 星期四 下午
74369	891700824674013	502164926328606	OK	Digi	Malaysia	B3	2020/2/13 星期四 下午
74368	435300376399616	502169914589727	OK	Digi	Malaysia	B3	2020/2/13 星期四 下午
74367	678179971730231	502162036187329	OK	Digi	Malaysia	B3	2020/2/13 星期四 下午
74366	084633811177608	502168499452202	OK	Digi	Malaysia	B3	2020/2/13 星期四 下午
74365	006704093683132	502163735485909	OK	Digi	Malaysia	B3	2020/2/13 星期四 下午



(APP For Android Phone)

Scope of application:

A: The real estate: release property information

B: Department stores, Supermarkets, Hotels, etc., for release product service, promotion and discount information.


C: The exhibition: Car fairs, House fairs.

D: Activities, Events, Send text message to around people.

E: National Election.

Software Instructions

A: The file compression package

Unzip the file package, IMSI_SMS.rar.  IMSI_SMS.rar There are 2 files in the folder, one is the main program and the other is the configuration file.

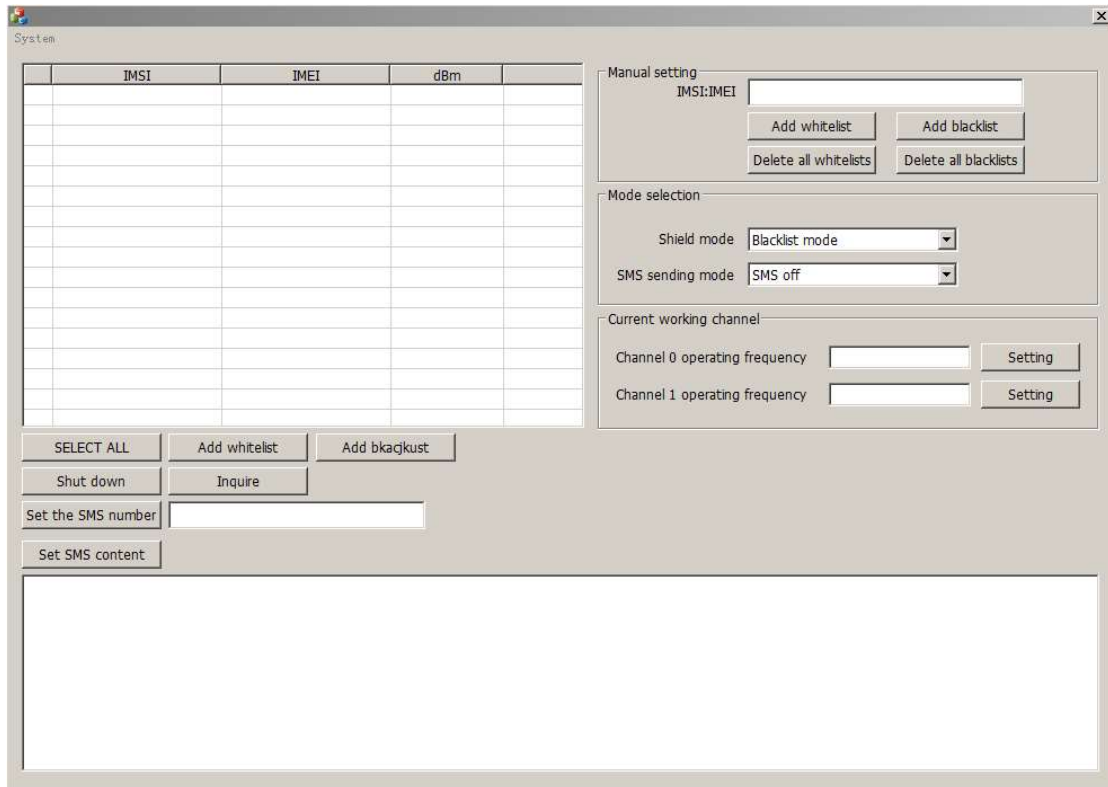
Open the configuration file setup.ini and display it as follows:

```
[SYS]
IP=192.168.10.111
PORT=9999
[SYS]↵
IP=192.168.10.111↵
PORT=9999↵
```

The IP address is the address of the device. The port number of PORT=9999 is fixed. The user does not need to modify it. After modification, the device will not be connected.

B: The main program IMSI_SMS.exe  IMSI_SMS.exe

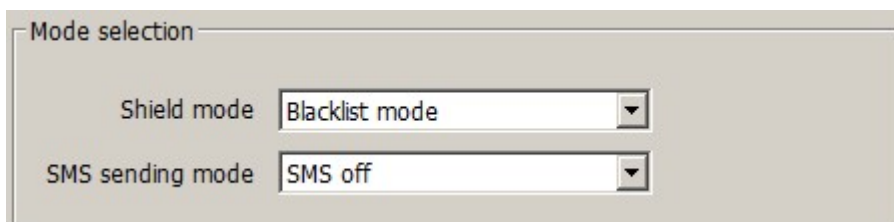
The interface is displayed as follows:



Please click on the query

Inquire

Get the device to the latest to the parameter information. The device has two lists, one for whitelisting and one for blacklisting. The two lists are independent of the database, and the same target mobile phone IMSI can be added to both databases at the same time.



There have 4 working modes, and 4 working modes corresponding to SMS messages.

1. Blacklist mode: For the target in the blacklist database, select the corresponding send mode to SMS. You can send to individual users

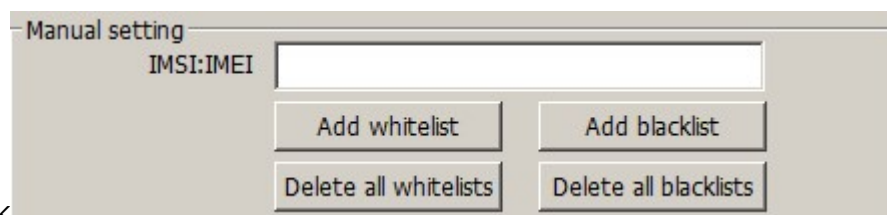
or all users.

2. Whitelist mode: For the target in the whitelist database, select the corresponding send mode to SMS. You can send to individual users or all users.

3. All black mode: not for the blacklist database and whitelist database, full control, the mobile users cannot make call, cannot send text messages.

4. all pull white mode: not for the blacklist database and whitelist database, all give up control, can make call, can send text messages, it just collects data, and then release the target phone.

C:



The screenshot shows a 'Manual setting' window with a text input field labeled 'IMSI:IMEI'. Below the input field are four buttons: 'Add whitelist', 'Add blacklist', 'Delete all whitelists', and 'Delete all blacklists'.

Click

You can delete the whitelist database or the blacklist database. You can also manually enter a whitelist database or a blacklist database.

Add one at a time, the format is: "IMSI: IMEI"

If you don't want to fill in manually, you can wait until the target phone is collected and check the Add database.

	IMSI	IMEI	dBm	
<input type="checkbox"/>	460029758052720	357745968261750	-29.25	
<input type="checkbox"/>	460010824045089	860782504940350	-1.75	
<input type="checkbox"/>	460021204023651	869630062298370	-2	
<input type="checkbox"/>	460010952039891	866842106725000	-43.75	
<input type="checkbox"/>	460014256069840	353387726561040	-36.75	
<input type="checkbox"/>	460018252021425	867932500234570	0	
<input type="checkbox"/>	460012422036150	359857982413520	-16.25	
<input type="checkbox"/>	460029758052720	357745968261750	-29.75	
<input type="checkbox"/>	460018252021425	867932500234570	0	
<input type="checkbox"/>	460010824045089	860782504940350	-25.25	
<input type="checkbox"/>	460014256069840	353387726561040	-36	
<input type="checkbox"/>	460012422036150	359857982413520	-14	
<input type="checkbox"/>	460017488013340	861012332616150	-16	
<input type="checkbox"/>	460021204023651	869630062298370	-1	
<input type="checkbox"/>	460029758052720	357745968261750	-27	
<input type="checkbox"/>	460021204023651	869630062298370	-1	

Current working channel

Channel 0 operating frequency

Channel 1 operating frequency

D: Click

Set the step parameters of a, b, c, and d above, and click to set to the device. The operating frequency of the device can be read automatically or manually. After each modification of the working mode and the text message working mode, you need to click the setting button. The device will recognize your selection mode.

E: click on the SMS editing window

Set the SMS number

Set SMS content

Enter the sender's name, support letters or numbers, and click:

Set the SMS number

Enter the sender's text words, support letters or numbers, the content is designed to a maximum of 1300 bytes, and then click to confirm. When the input is long enough to the text message, the target phone will receive a slower speed.

Set SMS content

F:

Start up

Shut down

This switch has 2 states, one is to start work and the other is to close the work. When the a, b, c, d, e step parameters are all set successfully, we can click to start working. The device starts to work according to the user's setting mode after 1 minute.

Start up

When the user wants to stop working, click the Close Work button and the device will stop working immediately.

Others:

- The device is shipped with no physical brand name and labels. We can do branding for you.
- Built on Military Specification, the unit can be operated as portable, car mounted or fixed installed.
- Due to the sophisticated software algorithm implemented on this device, responsible ownership should apply.

- Permit to operate may be required and may vary depending on which country you will use the unit.

For more information, please contact Us:

Skype: kevin_yin04

WhatsApp: +1 (947) 622-2364

Sales@thespysolution.com

www.thespysolution.com