

# **THE ONLY REAL SMS BROADCASTER USERMANUAL Version\_21.3.1**

**SMS Broadcaster machine is a Portable Messaging Device designed for Government, Military and marketing business.**

**It is powered by a complex software algorithm and next generation RF computer hardware.**

**Use the device means you do not have to struggle in maximizing your advertising, expenditure trying to reach the right target group. You can now determine where your target market is and send your message there.**

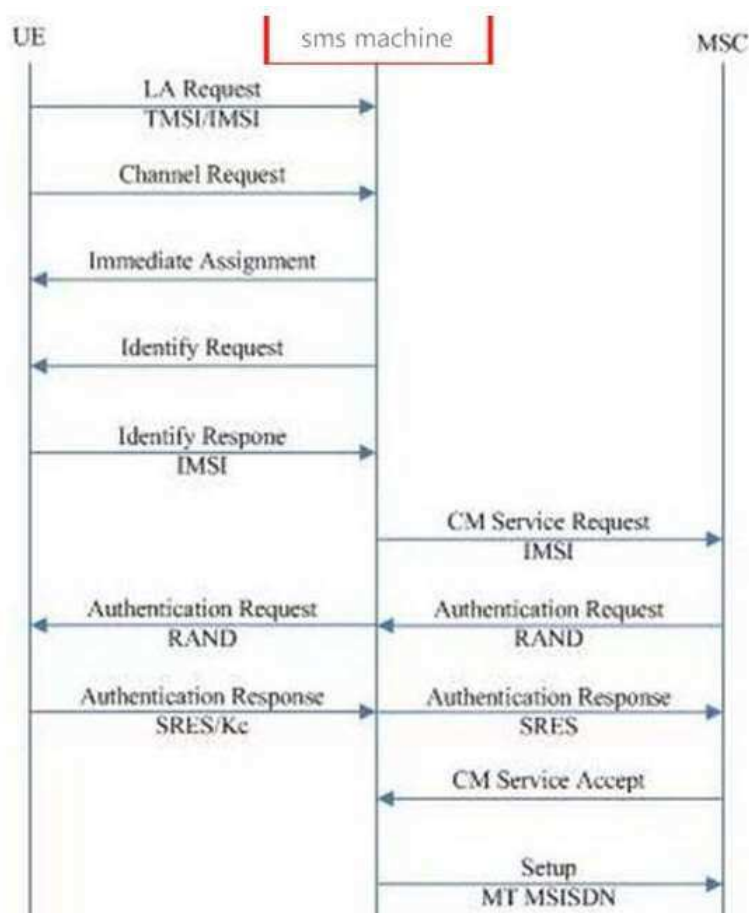


**Model: PISCES -X**

## Working Principle:

This unit has the ability to digitally acquire the identity of the surrounding mobile phone devices within its radius and can directly transmit SMS alert or advertising messages by passing your regular network provider. control or release the surrounding mobile phone devices and monitor receive SMS from mobile phone.

The unit is standalone and do not require cooperation



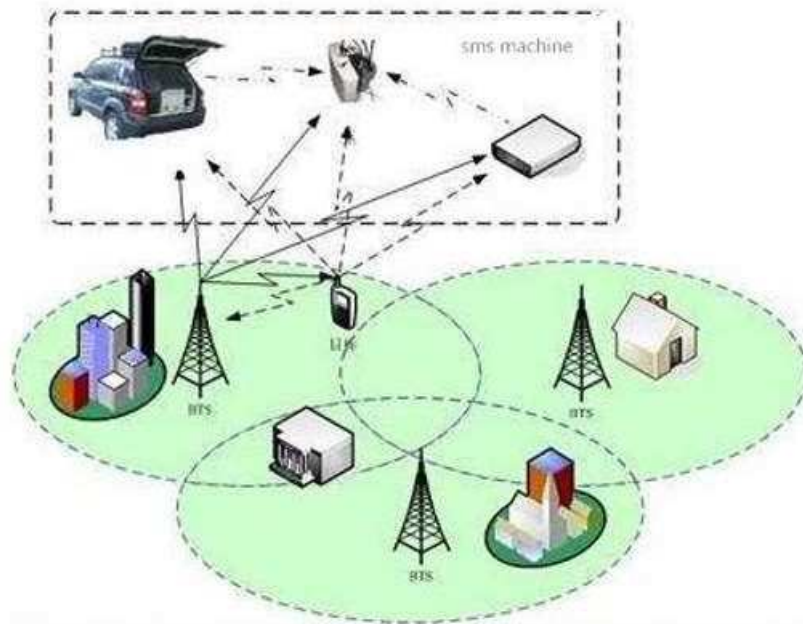
with any cellular operators.

## **Product Features:**

The machine searches the mobile phone number in the area through software, and then send the text message to mobile phone. No need to know the mobile phone number in the area in advance.

- (1) Scope of radiation to the machine as a center, diameter of 500– 2000 meters.**
- (2) Support all mobile phones(android, Phone),All frequency, includes 2G,3G,4G, no need jammer.**
- (3) Sending speed: up to 1000 SMS per minute**
- (4) The sender ID can be letters or alphanumeric both.**
- (5) Portable equipment: you can send bulk SMS in anywhere, anytime.**
- (6) “0” Cost: no need sim card, no need internet. Really one–time payment, lifetime usage.**
- (7) It can send more than 1000 characters in one SMS.**
- (8) IMEI/IMSI catcher. No need to know mobile number data advance.**
- (9) Auto ARFCN, Friendly software interface, control by mobile phone or laptop.**
- (10) Track someone cell phone(optional)**

## Application Guide



## Comparison With other Solution:

PLATFORM	SMS Broadcaster	Multi-SIM Text Blaster	Online / Bulk / SIP SMS	Telco Cell Broadcast
Full Admin Control	User	User	Host Provider	Telco
Subscribers Number	Not Required	Required	Required	Limited to its Subscribers
SIM Card	Not Required	Required	Not Required	Not Required
Network	Independent	Telco Dependent	Host & Telco Dependent	Telco Dependent
Message Length	upto 1000 characters	140-160 characters	140-160 characters	93 characters
Sender Branding	Name or Number	SIM Number	Name or Number	Name or Number
Broadcast Effectivity	All Telco / All Networks	Specific Telco	Specific Telco Partner	Specific Telco Subscribers
Message based Targeting	Yes	Requires pre-registered numbers	Requires pre-registered numbers	Yes
Network Congestion	No	Yes	Yes	No if priority mode
Radio Transmission	Active only when sending	Continuous	Continuous	Continuous
Equipment Mobility	Yes	Yes	No	No
Delivery Reports	Yes	Yes	Yes	No
Repetition Rate	Yes	No	No	Yes
Message Storage	Inbox	Inbox	Inbox	Handset dependent
Broadcast Reception	Messaging Function	Messaging Function	Messaging Function	Requires users activation
Cost	Free	per Send	per Send	per Send

# Specification:

<b>Model</b>	TWT2019
<b>Usability</b>	Portable, Car Mounted or Fixed Installed
<b>Operating Standard</b>	GSM
<b>Broadcast Penetration</b>	GSM, UMTS, 3G, LTE
<b>Frequency Band Option</b>	850, 900, 1700, 1800, 1900, 2100
<b>Output Power Option</b>	20W
<b>Optional Antenna Type</b>	BTS ANTENNA
<b>Effective Range</b>	2KM
<b>Transmission Speed</b>	Upto 1000 SMS per Minute
<b>Management</b>	PC via Web
<b>Power Requirement</b>	Auto 110-220VAC
<b>Metal Housing</b>	Standard 2U*2
<b>Anti-Shock Casing</b>	at Option
<b>Branding</b>	OEM or on request

# User interface:

(Control software For PC)

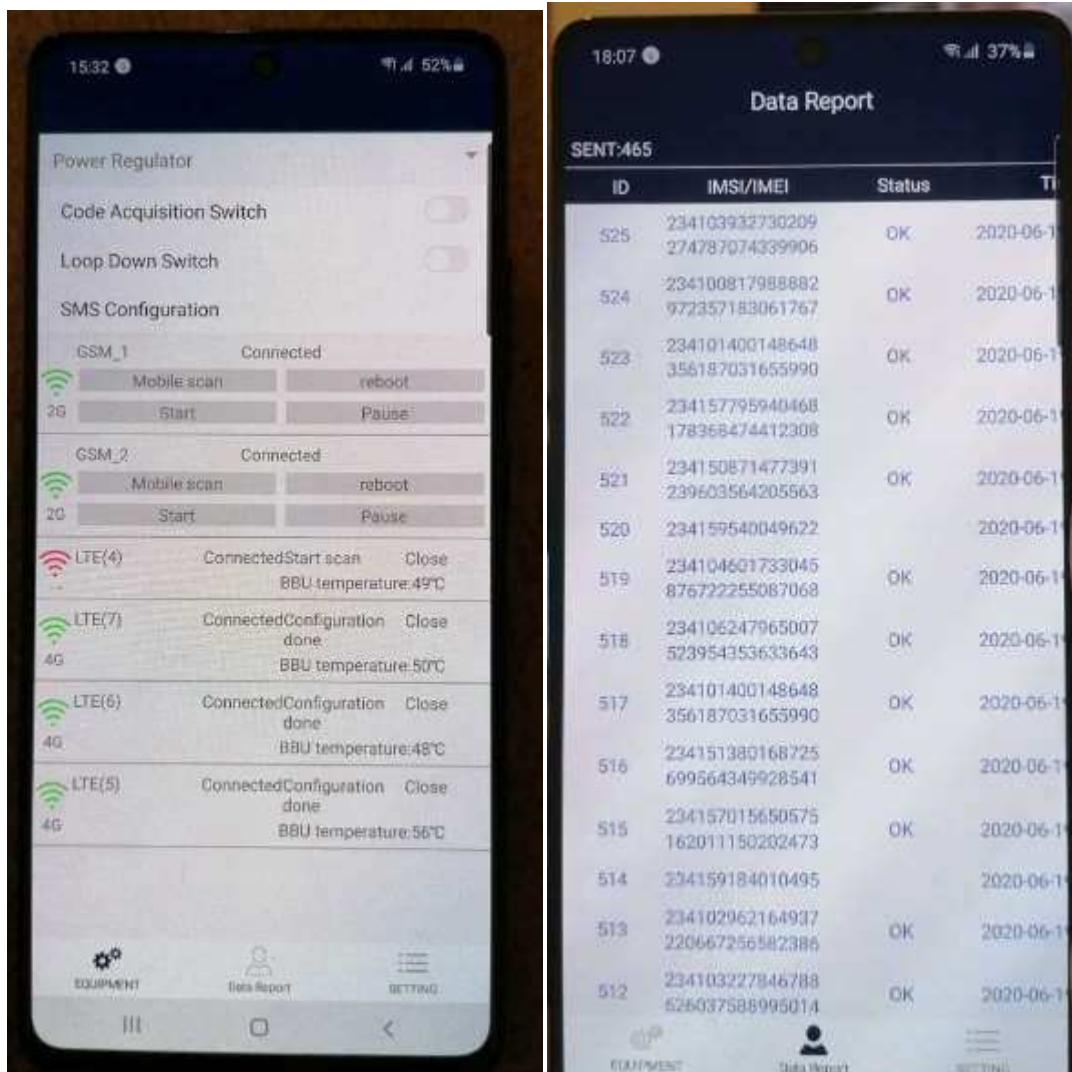
The screenshot displays the 'Mobile Control' software interface. At the top, there are navigation tabs for 'Device', 'person', 'SMS EDIT', 'GSM RADIO', 'Alarm', 'License', and 'About'. The main area is divided into two sections: 'Device Status' on the left and 'Collection Record' on the right.

**Device Status:** A table showing the status of various devices. The columns are Baseband, Available, Sync, Activation, and Radio. Devices B38, B39, and B40 are in an 'Unconnecte' state with 'Sync not star'. Devices B7 and B3 are 'Available' and connected to a 'Base station'.

**Collection Record:** A table listing individual device records. The columns include ID, IMEI, IMSI, State, Operator, Belong, BBUid, and Time. The records show a list of devices with their respective identifiers and connection times, all appearing to be from Digi in Malaysia.

**SHOW LOG:** A scrollable log area on the left side of the 'Collection Record' section, showing a series of system messages such as 'Configure GSM successfully!', 'LTE redirect successfull!', and 'LTE cell updated successfully!' with timestamps.

At the bottom of the interface, there are status indicators: 'Conneted' and a timestamp '2020-03-01 00:00:00'.



**(APP For Android Phone)**

### **Scope of application:**

**A: The real estate: release property information**

**B: Department stores, Supermarkets, Hotels, etc., for release product service, promotion and discount information.**

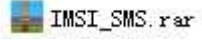
**C: The exhibition: Car fairs, House fairs.**

**D: Activities, Events, Send text message to around people.**

**E: National Election.**

## **Software Instructions**

**A: The file compression package**

Unzip the file package, IMSI\_SMS.rar.  There are 2 files in the folder, one is the main program and the other is the configuration file.

Open the configuration file setup.ini and display it as follows:

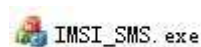
```
[SYS]
IP=192.168.10.111
PORT=9999

[SYS]
IP=192.168.10.111
PORT=9999
```

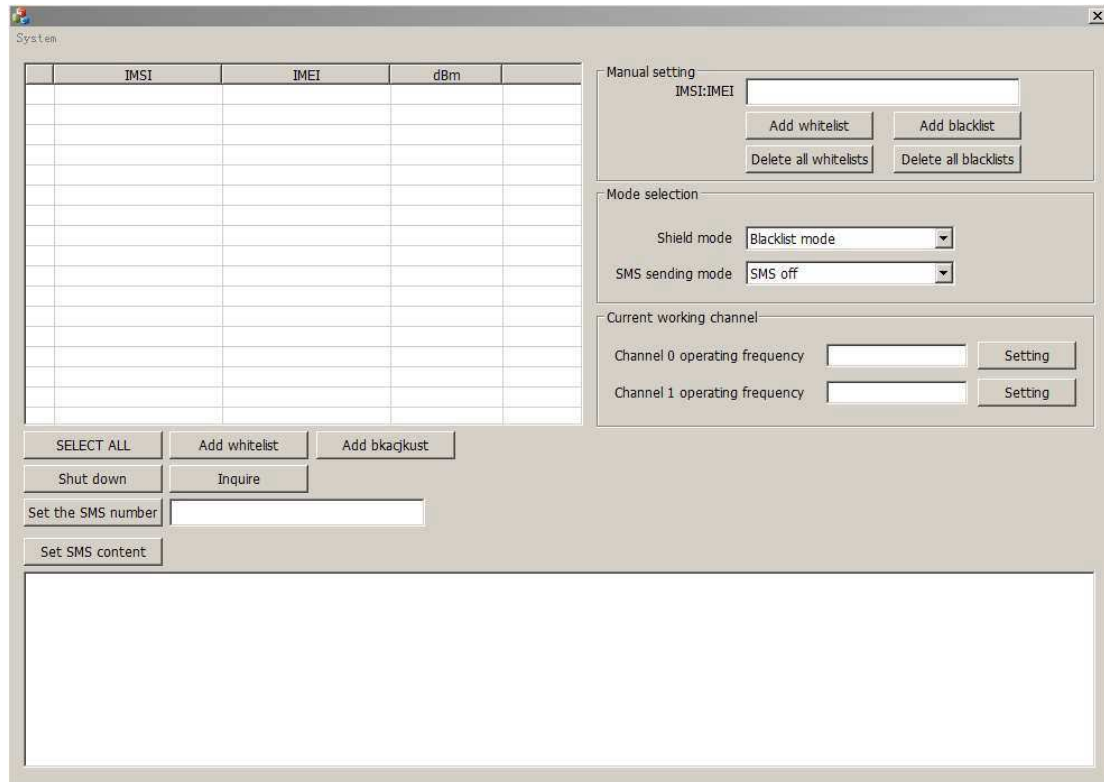
The IP address is the address of the device. The port number of PORT=9999 is fixed. The user does not need to modify it.

After modification, the device will not be connected.

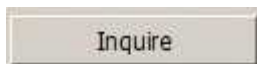
**B: The main program**



IMSI\_SMS.exe The interface is displayed as follows:

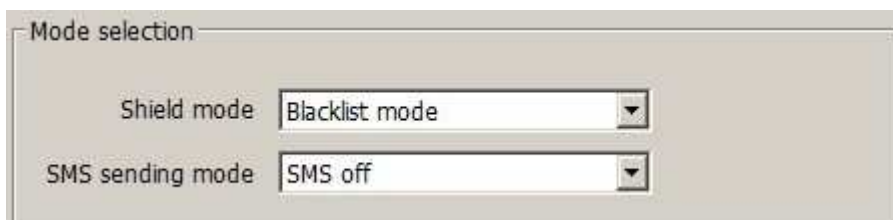


**Please click on the query**



**Get the device to the latest to the parameter information.**

**The device has two lists, one for whitelisting and one for blacklisting. The two lists are independent of the database, and the same target mobile phone IMSI can be added to both databases at the same time.**



**There have 4 working modes, and 4 working modes corresponding to SMS messages.**

**1. Blacklist mode: For the target in the blacklist database, select the corresponding send mode to SMS. You can send to individual users**



or all users.

**2. Whitelist mode:** For the target in the whitelist database, select the corresponding send mode to SMS. You can send to individual users or all users.

**3. All black mode:** not for the blacklist database and whitelist database, full control, the mobile users cannot make call, cannot send text messages.

**4. all pull white mode:** not for the blacklist database and whitelist database, all give up control, can make call, can send text messages, it just collects data, and then release the target phone.

**C:**



**Click**

You can delete the whitelist database or the blacklist database. You can also manually enter a whitelist database or a blacklist database. Add one at a time, the format is: "IMSI: IMEI"

If you don't want to fill in manually, you can wait until the target phone is collected and check the Add database.

	IMSI	IMEI	dBm	
<input type="checkbox"/>	460029758052720	357745968261750	-29.25	
<input type="checkbox"/>	460010824045089	860782504940350	-1.75	
<input type="checkbox"/>	460021204023651	869630062298370	-2	
<input type="checkbox"/>	460010952039891	866842106725000	-43.75	
<input type="checkbox"/>	460014256069840	353387726561040	-36.75	
<input type="checkbox"/>	460018252021425	867932500234570	0	
<input type="checkbox"/>	460012422036150	359857982413520	-16.25	
<input type="checkbox"/>	460029758052720	357745968261750	-29.75	
<input type="checkbox"/>	460018252021425	867932500234570	0	
<input type="checkbox"/>	460010824045089	860782504940350	-25.25	
<input type="checkbox"/>	460014256069840	353387726561040	-36	
<input type="checkbox"/>	460012422036150	359857982413520	-14	
<input type="checkbox"/>	460017488013340	861012332616150	-16	
<input type="checkbox"/>	460021204023651	869630062298370	-1	
<input type="checkbox"/>	460029758052720	357745968261750	-27	
<input type="checkbox"/>	460021204023651	869630062298370	-1	

Current working channel

Channel 0 operating frequency

Channel 1 operating frequency

**D:Click**

Set the step parameters of a, b, c, and d above, and click to set to the device. The operating frequency of the device can be read automatically or manually. After each modification of the working mode and the text message working mode, you need to click the setting button. The device will recognize your selection mode.

**E: click on the SMS editing window**

Set the SMS number

Set SMS content

Enter the sender's name, support letters or numbers, and click:

Set the SMS number

**Enter the sender's text words, support letters or numbers, the content is designed to a maximum of 1300 bytes, and then click to confirm. When the input is long enough to the text message, the target phone will receive a slower speed.**

Set SMS content

**F:**

Start up

Shut down

**This switch has 2 states, one is to start work and the other is to close the work. When the a, b, c, d, e step parameters are all set successfully, we can click to start working. The device starts to work according to**

**the user's setting mode after 1 minute.**

Start up

**When the user wants to stop working, click the Close Work button and the device will stop working immediately.**

**Others:**

- **The device is shipped with no physical brand name and labels. We can do branding for you.**
- **Built on Military Specification, the unit can be operated as portable, car mounted or fixed installed.**
- **Due to the sophisticated software algorithm implemented on this device, responsible ownership should apply.**

- **Permit to operate may be required and may vary depending on which country you will use the unit.**